



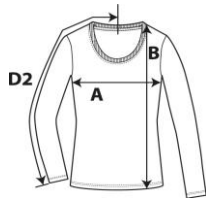
**399**



**Women's Featherweight Long Sleeve Scoop Tee**

**DETAILS**

<b>Weight</b>	110.0 G/SqM
<b>Content</b>	100% Ring Spun Cotton
<b>Features</b>	Fabric 40/1 Semi-fitted contoured silhouette with side seam and display tape Single-needle seamed collar Twin-needle sleeve and bottom hem TearAway label Oeko-Tex® Standard 100 Certified
<b>Sizes</b>	S-2XL
<b>Case Packs</b>	LS - LXL 72 PIECES L2XL 36 PIECES
<b>Colours</b>	7
<b>SKU's</b>	35



**SPECIFICATIONS**

	<b>Tol-</b>	<b>Tol+</b>	<b>S</b>	<b>M</b>	<b>L</b>	<b>XL</b>	<b>2XL</b>
<b>Centimeters</b>							
<b>Chest (A)</b>	1.905	1.905	43.180	45.720	50.800	55.880	58.420
<b>Length from HPS (B)</b>	2.540	2.540	66.040	68.580	71.120	73.660	77.470
<b>Sleeve length (centre back) (D2)</b>	2.540	2.540	79.375	81.915	84.455	86.995	89.535
<b>Inches</b>							
<b>Chest (A)</b>	0.750	0.750	17.000	18.000	20.000	22.000	23.000
<b>Length from HPS (B)</b>	1.000	1.000	26.000	27.000	28.000	29.000	30.500
<b>Sleeve length (centre back) (D2)</b>	1.000	1.000	31.250	32.250	33.250	34.250	35.250

**S-2XL**

<b>COLOURS</b>	Code
Black	036
Coral	348
Green Apple	302
Lemon Zest	331
Navy	032
Silver	333
White	030

**CHANGES**

Total Net Change 0 SKU's