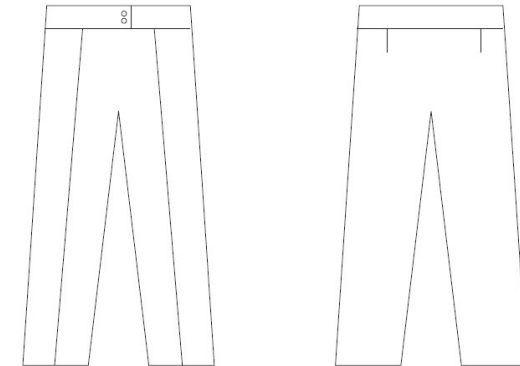


**PR538****LADIES' TAPERED LEG TROUSER**

CARTON	PACK	NO. SKU'S
12	3	18



Colour	Pantone	C	M	Y	K
Black	Black	0	0	0	100

**Fabric**

100% Polyester plain weave. 185gsm

**Colours** Black

**Sizes** 8, 10, 12, 14, 16, 18, 20, 22, 24  
Regular 30" (77cm) and Long 33" (84cm) Leg

**Features**

- Deep waist band trouser
- Front fastening zip
- Cross over waistband with two button fastening
- Without pockets for a flattering fit
- Straight leg

**Country of Origin** China

**Carton Dimensions** 60cm x 44cm x 17cm

**Carton Weight** 6.2 kg approx.

**VAT Code** 6204 62 1100

Size	8	10	12	14	16	18	20	22	24
<b>Waist to fit "</b>	24	26	28	30	32	34	36	38	40
<b>Waist to fit cm</b>	59	64	69	74	79	84	89	94	99
<b>Waist actual cm</b>	76	81	84	89	94	99	104	109	114
<b>DE,NL</b>	36	38	40	42	44	46	48	50	52
<b>FR,ES,PT</b>	36	38	40	42	44	46	48	50	52
<b>IT</b>	40	42	44	46	48	50	52	54	56

**Marketing Description**

A stylish tapered fit trouser following the contours of the leg. Features two non-functional vented pockets for decoration to the rear with two swing pockets along the side seams. Fastens with a hook, bar and button to the waistline and has belt loops.

