

CARTON	PACK	NO. SKU'S
12	3	27

**Fabric**

100% Polyester. 160gsm

**Colours**

Black Heather, Grey Heather, Blue Heather

**Sizes**

8, 10, 12, 14, 16, 18, 20, 22, 24

**Features**

- 'Grandad' style collar
- Buttoned placket
- Soft linen fabric feel
- Three quarter sleeves
- Princess seams
- Side vents

**Country of Origin**

China

**Carton Dimensions**

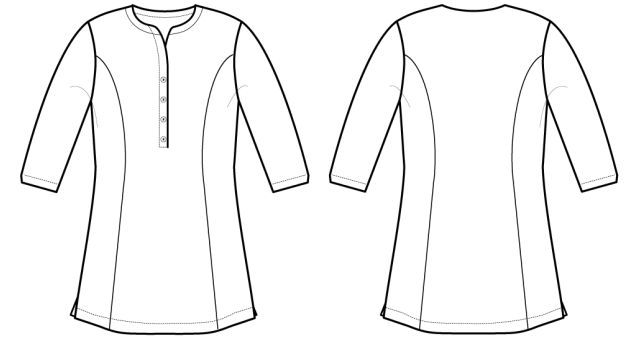
60cm x 44cm x 17cm

**Carton Weight**

6.5kg

**VAT Code**

6211 43 1000

**PR685****"VERBENA" LINEN-LOOK BUTTON UP BEAUTY TUNIC**

Colour	Pantone	C	M	Y	K
Black Heather	740	11	6	0	67
Grey Heather	425	48	29	26	76
Blue Heather	2378	83	63	26	34

Size	8	10	12	14	16	18	20	22	24
<b>Bust to fit "</b>	33	35	37	39	41	43	45	47	49
<b>Bust to fit cm</b>	84	89	94	99	104	109	114	119	124
<b>Call size</b>	XS	S	M	L	XL	2XL	3XL	4XL	5XL
<b>Bust actual cm</b>	94	99	104	109	114	120	126	132	138
<b>DE,NL</b>	36	38	40	42	44	46	48	50	52
<b>FR,ES,PT</b>	36	38	40	42	44	46	48	50	52
<b>IT</b>	40	42	44	46	48	50	52	54	56
<b>Back length cm</b>	70	71	72	73	74	75	76	77	78

**Marketing Description**

A welcome addition to our Beautywear Collection, this tunic has a lovely soft linen fabric feel and is styled with the feminine figure in mind with front and back princess seams and side vents. Two contrast coloured yarns are woven together to give this pleasing marl effect. A simple over the head design with a 'Grandad' style collar that falls into an attractive V-neck buttoned placket. Three-quarter length sleeves finish off an attractive stylish, piece.

