

PR661

'CUISINE 'LONG SLEEVE CHEF'S JACKET

CARTON	PACK	NO. SKU'S
24	6	16



Fabric

65% Polyester, 35% Cotton Twill, 195gsm

Colours

Black , White

Sizes

XS, S, M, L, XL, 2XL, 3XL, 4XL

Features

- Superior overall comfort
- Soft hand feel
- Mandarin Collar stand with topstitching
- Removable studs
- Unisex styling
- Comes with black studs (other colours available see PR652)
- Ten hole wrap over fastening
- Turn Back Split Cuff

Country of Origin

China & Bangladesh

Carton Dimensions

60cm x 40cm x 22cm

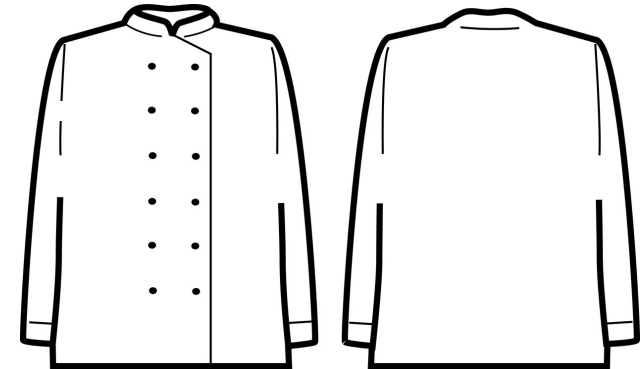
Carton Weight

10kg approx.

VAT Code

6211 33 1000

Colour	Pantone	C	M	Y	K
Black	Black	0	0	0	100
White	0	0	0	0	0



Call size	XS	S	M	L	XL	2XL	3XL	4XL
Chest to fit "	30	34	38	42	46	50	54	58
Chest to fit cm	77	87	96	107	117	126	136	146
Chest actual cm	92	100	108	116	124	132	140	148
DE,NL	44	46	48	52	56	58	60	62
FR,ES,PT	40	42	44	46	48	50	52	54
Back length cm	76	76	76	76	76	76	76	76

Marketing Description

A chef's jacket that features black plastic stud buttons that can be removed and replaced with other colours (PR652) so the culinary team can reflect restaurant branding. Designed with a Mandarin collar with top stitching and turn back spit cuffs.



INDUSTRIAL LAUNDERING 85°C MAXIMUM