

**GILDAN®**



**64550L**

**Softstyle Ladies' Deep Scoop T-Shirt**

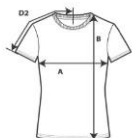


**DETAILS**

**Weight** 153.0 G/SqM (White 144.0 G/SqM)  
**Content** 100% Combed Ring Spun Cotton  
**Yarn Count** 31/1  
**Features** Semi-fitted contoured silhouette with side seam  
 High stitch density for smoother printing surface  
 Seamless Twin needle 1.3 cms. collar  
 Deep scoop neckline  
 Taped neck and shoulders  
 Tear away label and double-satin label  
 Cap sleeves  
 Twin needle sleeve and bottom hems

**Sizes** S-2XL  
**Case Packs** S - XL 72 PIECES  
 2XL 36 PIECES

**Colours** 10  
**SKU's** 50



**SPECIFICATIONS**

	Tol-	Tol+	S	M	L	XL	2XL
<b>Centimeters</b>							
<b>Chest (A)</b>	1.905	1.905	43.815	48.895	53.975	59.055	64.135
<b>Length from HPS (B)</b>	2.540	2.540	64.770	66.040	68.580	71.120	72.390
<b>Sleeve length (Centre back) (D2)</b>	1.905	1.905	33.655	35.560	37.465	40.005	42.545
<b>Inches</b>							
<b>Chest (A)</b>	0.750	0.750	17.250	19.250	21.250	23.250	25.250
<b>Length from HPS (B)</b>	1.000	1.000	25.500	26.000	27.000	28.000	28.500
<b>Sleeve length (Centre back) (D2)</b>	0.750	0.750	13.250	14.000	14.750	15.750	16.750

**S-2XL**

COLOURS	Code	Comments
Black	036	
Dark Heather	108	35% Cotton, 65% Polyester
Graphite Heather	516	50% Cotton, 50% Polyester
Heather Irish Green	215	35% Cotton, 65% Polyester
Heather Royal	218	35% Cotton, 65% Polyester
Maroon	083	
Navy	032	
Red	040	
Ring Spun Sport Grey	295	90% Cotton, 10% Polyester
White	030	

**CHANGES**

Deletions

S, M, L, XL, 2XL Azalea, Heather Aubergine, Heather Navy, Heather Purple, Heather Radiant Orchid, Royal  
 Total Net Change 30 SKU's