

CARTON	PACK	NO. SKU'S
12	3	27

**Fabric**

100% Polyester. 160gsm

Colours

Black Heather, Grey Heather, Blue Heather

Sizes

8, 10, 12, 14,16, 18, 20, 22, 24

Features

- Concealed zip back
- Soft linen fabric feel
- Round neck V-cut neckline
- Front and back princess seams
- Side vents
- Open pockets to the sides

Country of Origin

China

Carton Dimensions

60cm x 44cm x 17cm

Carton Weight

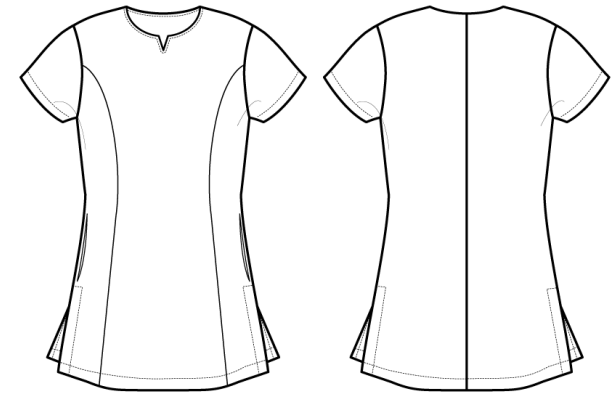
6.5kg

VAT Code

6211 43 1000

PR688**"VIOLA" LINEN-LOOK CUT NECK BEAUTY TUNIC**

Colour	Pantone	C	M	Y	K
Black Heather	740	11	6	0	67
Grey Heather	425	48	29	26	76
Blue Heather	2378	83	63	26	34



Size	8	10	12	14	16	18	20	22	24
Bust to fit "	33	35	37	39	41	43	45	47	49
Bust to fit cm	84	89	94	99	104	109	114	119	124
Call size	XS	S	M	L	XL	2XL	3XL	4XL	5XL
Bust actual cm	94	99	104	109	114	120	126	132	138
DE,NL	36	38	40	42	44	46	48	50	52
FR,ES,PT	36	38	40	42	44	46	48	50	52
IT	40	42	44	46	48	50	52	54	56
Back length cm	70	71	72	73	74	75	76	77	78

Marketing Description

A welcome addition to our Beautywear Collection, this tunic has a lovely soft linen fabric feel and is styled with the feminine figure in mind with front and back princess seams and side vents. Two contrast coloured yarns are woven together to give this pleasing marl effect. A simple over-the-head design with a concealed zip back and handy open side pockets. A round neck that cuts into a small V-shape finishes off an attractive, stylish piece.

